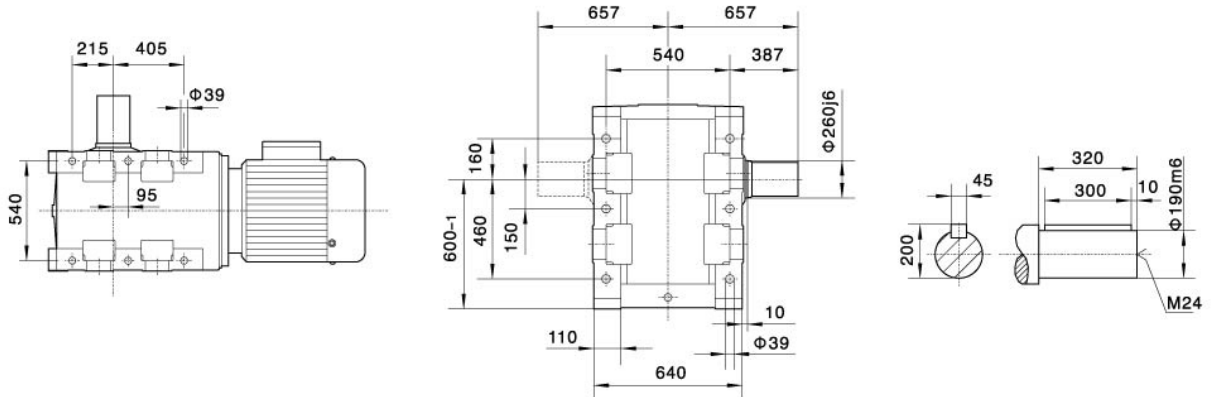
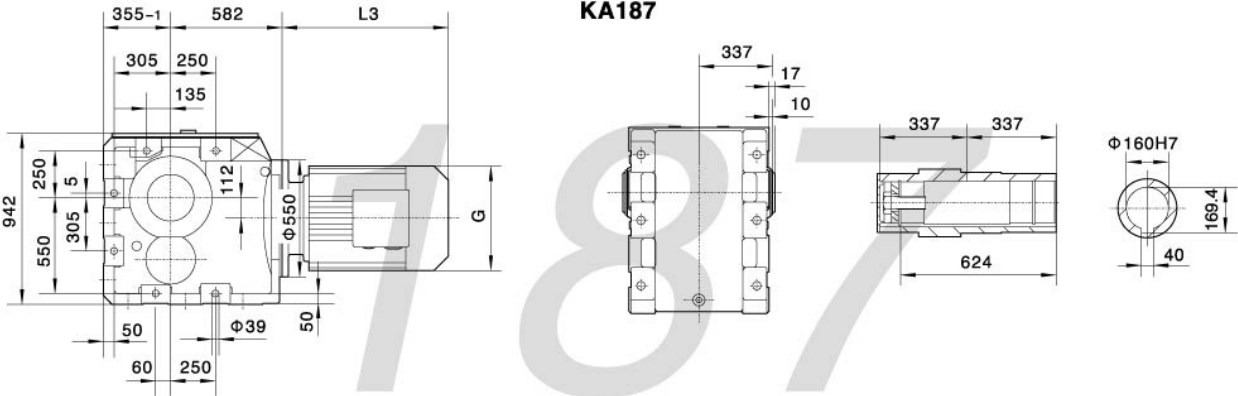


K187

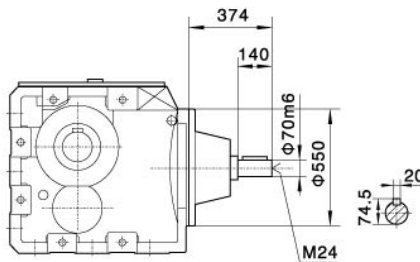
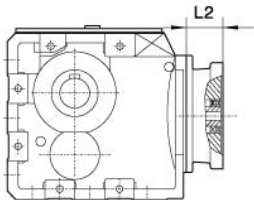


KA187

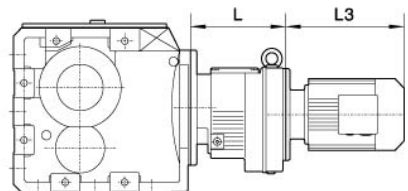


电机需方配或配特殊电机时
需加联接法兰

K..S187



K..187R97(R107)



When equipping the user's motor or the special one, the flange is required to connected.

注:其余尺寸见相对应结构形式

Note:For other values please refer to the opposed structure.

Y2电机座号 Motor size	160M	160L	180M	180L	200	225S	225M	250	280S	K..187R97		K..187R107	
										L	320	370	315M
功率/4P Power/(kW)	11	15	18.5	22	30	37	45	55	75	90	110	132	160 200
L3	567	602	635	666	642	669	691	770	828	879	1100	1180	1270
G	330	330	380	380	420	470	470	510	580	580	645	645	645
L2	143	143	143	143	143	143	143	143	143	143	145	145	145

注:1.KA、KF、KAF、KAZ壳体为通用件,安装尺寸均可相互参照。 2."K.."表示K、KA、KF、KAF、KAZ、KAB。

Note:1.The housings of KA、KF、KAF、KAZ are common parts.The mounting dimensions may consult each other. 2."K.."mean K、KA、KF、KAF、KAZ、KAB.